

Product Overview

The NSI1042C is an isolated CAN transceiver which fully compatible with the ISO11898-2 standard. The NSI1042C integrated two channel digital isolators and a high reliability CAN transceiver. The digital isolator is silicon oxide isolation based on Novosense capacity isolation technology. The high integrated solution can help to simplify system design and improve reliability. The NSI1042C device is safety certified by UL1577 support 5kV_{rms} insulation withstand voltages, while providing high electromagnetic immunity and low emissions. The data rate of the NSI1042C is up to 5Mbps. The NSI1042C provides thermal protection and transmit data dominant time out function.

Key Features

- Fully compatible with the ISO11898-2 standard
- Up to 5000V_{rms} Insulation voltage
- Power supply voltage
VDD1: 2.5V to 5.5V
VDD2: 4.5V to 5.5V
- Bus fault protection of -70V to +70V
- Transmit data (TXD) dominant time out function
- Over current and over temperature protection
- Data rate: up to 5Mbps
- Ideal Passive, High Impedance Bus and Logic Terminals When Unpowered
- High CMTI: 150kV/μs
- Low loop delay: <220ns
- High system level EMC performance:
Enhanced system level ESD, EFT, Surge immunity
- Operation temperature: -40°C ~125°C
- RoHS-compliant packages:
SOP8(300mil)
SOP16(300mil)

Safety Regulatory Approvals

- UL recognition:
 - SOP8(300mil): 5000V_{rms} for 1 minute per UL1577
 - SOP16(300mil): 5700V_{rms} for 1 minute per UL1577
- CQC certification per GB4943.1
- CSA component notice 5A approval IEC60950-1 standard
- DIN EN IEC 60747-17 (VDE 0884-17)

Applications

- Industrial automation system
- Isolated CAN Bus
- Telecom

Device Information

Part Number	Package	Body Size
NSI1042C-DSWVR	SOP8(300mil)	5.85mm ×7.50mm
NSI1042C-DSWR	SOP16(300mil)	10.30mm ×7.50mm

Functional Block Diagrams

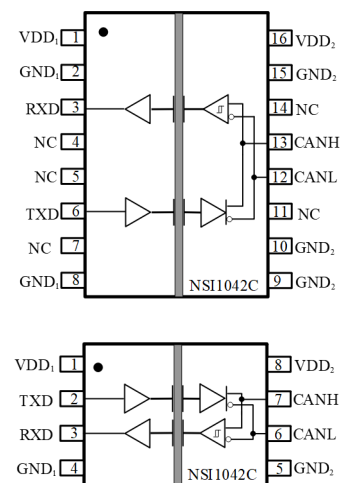


Figure 1. NSI1042C Block Diagram

INDEX

1. PIN CONFIGURATION AND FUNCTIONS	3
2. ABSOLUTE MAXIMUM RATINGS	4
3. ESD RATINGS	5
4. RECOMMENDED OPERATING CONDITIONS	5
5. THERMAL INFORMATION	5
6. SPECIFICATIONS	6
6.1. ELECTRICAL CHARACTERISTICS.....	6
6.2. SWITCHING ELECTRICAL CHARACTERISTICS	8
6.3. PARAMETER MEASUREMENT INFORMATION	9
7. HIGH VOLTAGE FEATURE DESCRIPTION	12
7.1. INSULATION AND SAFETY RELATED SPECIFICATIONS	12
7.2. INSULATION CHARACTERISTICS.....	12
7.3. SAFETY-LIMITING VALUES.....	13
7.4. REGULATORY INFORMATION	15
8. FUNCTION DESCRIPTION	16
8.1. DEVICE FUNCTIONAL MODES	16
8.2. TXD DOMINANT TIME-OUT FUNCTION.....	17
8.3. BUS DOMINANT TIME-OUT FUNCTION.....	17
8.4. CURRENT PROTECTION.....	17
8.5. OVER TEMPERATURE PROTECTION	17
9. APPLICATION NOTE	18
9.1. TYPICAL APPLICATION	18
9.2. PCB LAYOUT	18
10. PACKAGE INFORMATION	19
11. ORDER INFORMATION	21
12. DOCUMENTATION SUPPORT	21
13. TAPE AND REEL INFORMATION	22
14. REVISION HISTORY	25

1. Pin Configuration and Functions

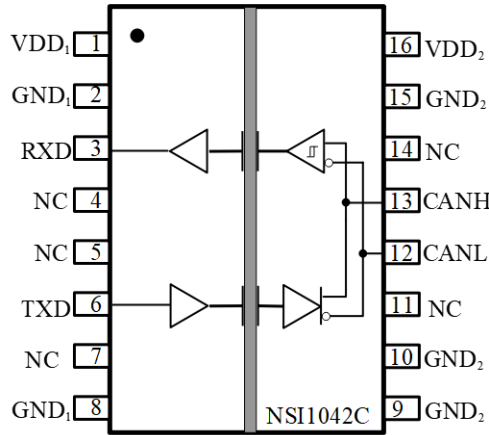


Figure 1.1 NSI1042C-DSWR Package

Table 1.1 NSI1042C-DSWR Pin Configuration and Description

NSI1042C-DSWR PIN NO.	SYMBOL	FUNCTION
1	VDD ₁	Power Supply for Side 1
2	GND ₁	Ground 1, the ground reference for Isolator Side 1
3	RXD	CAN receive data output (LOW for dominant and HIGH for recessive bus states)
4	NC	No Connection
5	NC	No Connection
6	TXD	CAN transmit data input (LOW for dominant and HIGH for recessive bus states)
7	NC	No Connection
8	GND ₁	Ground 1, the ground reference for Isolator Side 1
9	GND ₂	Ground 2, the ground reference for Isolator Bus Side
10	GND ₂	Ground 2, the ground reference for Isolator Bus Side
11	NC	No Connection
12	CANL	Low-level CAN bus line
13	CANH	High-level CAN bus line
14	NC	No Connection
15	GND ₂	Ground 2, the ground reference for Isolator Bus Side
16	VDD ₂	Power supply for Bus Side

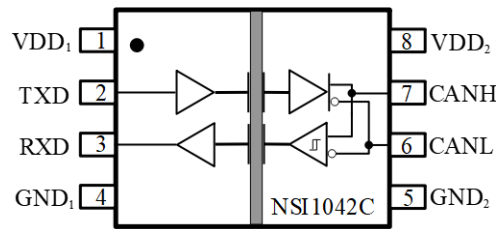


Figure 1.2 NSI1042C-DSWVR Package

Table 1.2 NSI1042C-DSWVR Pin Configuration and Description

NSI1042C-DSWVR PIN NO.	SYMBOL	FUNCTION
1	VDD ₁	Power Supply for Side 1
2	TXD	CAN transmit data input (LOW for dominant and HIGH for recessive bus states)
3	RXD	CAN receive data output (LOW for dominant and HIGH for recessive bus states)
4	GND ₁	Ground 1, the ground reference for Isolator Side 1
5	GND ₂	Ground 2, the ground reference for Isolator Bus Side
6	CANL	Low-level CAN bus line
7	CANH	High-level CAN bus line
8	VDD ₂	Power supply for Bus Side

2. Absolute Maximum Ratings

Parameters	Symbol	Min	Typ	Max	Unit	Comments
Power Supply Voltage	VDD ₁ , VDD ₂	-0.5		6.5	V	
Maximum Input Voltage	V _{TXD}	-0.4		VDD ₁ +0.4	V	
Maximum BUS Pin Voltage	V _{CANH} , V _{CANL}	-70		+70	V	
Output current	I _o	-15		15	mA	
Operating Temperature	T _{opr}	-40		125	°C	
Storage Temperature	T _{stg}	-65		150	°C	

3. ESD Ratings

Ratings		Value	Unit
Electrostatic discharge	Human body model (HBM), per AEC-Q100-002-RevD ● All pins	± 6000	V
	Charged device model (CDM), per AEC-Q100-011-RevB ● All pins	± 2000	V

4. Recommended Operating Conditions

Parameters	Symbol	Min	Typ	Max	Unit	Comments
Supply voltage, controller side	V _{CC1}	2.5		5.5	V	
Supply voltage, bus side	V _{CC2}	4.5	5	5.5	V	
Voltage at bus pins (separately or common mode)	V _I or V _{IC}	-30		30	V	
High-level input voltage	V _{IH}	2		5.5	V	TXD
Low-level input voltage	V _{IL}	0		0.8	V	TXD
High-level output current	I _{OH}	-70			mA	Driver
		-4			mA	Receiver
Low-level output current	I _{OL}			70	mA	Driver
				4	mA	Receiver
Ambient temperature	T _A	-40		125	°C	
Junction temperature	T _J	-40		150	°C	

5. Thermal Information

Parameters	Symbol	SOP8(300mil)	SOP16(300mil)	Unit
Junction-to-ambient thermal resistance	θ _{JA}	100	69.9	°C/W
Junction-to-case(top) thermal resistance	θ _{JC (top)}	40.8	31.8	
Junction-to-board thermal resistance	θ _{JB}	51.8	29	

6. Specifications

6.1. Electrical Characteristics

(VDD1=2.5V~5.5V, VDD2=4.5V~5.5V, T_A=-40°C to 125°C. Unless otherwise noted, Typical values are at VDD1 = 3.3V, VDD2 = 5V, T_A = 25°C)

Parameters	Symbol	Min	Typ	Max	Unit	Comments
Supply Voltage	VDD ₁	2.5		5.5	V	
	VDD ₂	4.5	5	5.5	V	
Logic side supply current	IDD ₁		1.97	3.50	mA	VDD ₁ =3.3V, TXD=0
			0.97	2.00	mA	VDD ₁ =3.3V, TXD=VCC1
			2.02	3.50	mA	VDD ₁ =5V, TXD=0
			1.02	2.00	mA	VDD ₁ =5V, TXD=VCC1
Bus side supply current	IDD ₂		46	70	mA	V _I =0V, R _{Load} =60Ω
			5.54	10	mA	V _I =VDD ₂
Thermal-Shutdown Threshold	T _{TS}	155	165	180	°C	
Common Mode Transient Immunity	CMTI	±100	±150		kV/μs	
Logic Side						
High level input voltage	V _{IH}	2			V	TXD pin
Low level input voltage	V _{IL}			0.8	V	TXD pin
High level input current	I _{IH}			10	μA	TXD pin
Low level input current	I _{IL}	-10			μA	TXD pin
Output Voltage High	V _{OH}	VDD ₁ -0.4			V	I _{OH} = -4mA, RXD pin
Output Voltage Low	V _{OL}			0.4	V	I _{OL} = 4mA, RXD pin
Input Capacitance	C _{IN}		2		pF	TXD pin
Driver						
CANH output voltage (Dominant)	V _{OH(D)}	2.8	3.48	4.5	V	TXD=0V, R _{Load} =60Ω
CANL output voltage (Dominant)	V _{OL(D)}	0.8	1.25	2.25	V	TXD=0V, R _{Load} =60Ω
CAN bus output voltage (Recessive)	V _{O(R)}	2	$\frac{0.5 \cdot VDD}{2}$	3	V	TXD=VDD1, R _{Load} =60Ω
Differential output voltage (Dominant)	V _{OD(D)}	1.5		3	V	VCC=5V, TXD=0, R _{Load} =60Ω, see Figure 6.1
Differential output voltage (Recessive)	V _{OD(R)}	-0.05		0.05	V	VCC=5V, TXD=V _{IO} , R _{Load} =60Ω, see Figure 6.1

		-0.1		0.1	V	VCC=5V, TXD=V _{IO} , NO Load, see Figure 6.1
Dominant short-circuit output current	I _{O(sc)dom}	-100		-40	mA	TXD=0V, t < t _{to(dom)TXD} , V _{CANH} =-30V
		40		100	mA	TXD=0V, t < t _{to(dom)TXD} , V _{CANL} =30V
Recessive short-circuit output current	I _{O(sc)rec}	-5		5	mA	Normal/Silent mode; V _{TXD} = VDD1; V _{CANH} = V _{CANL} = -27 V to +30 V
Receiver						
Positive-going bus input threshold voltage	V _{IT+}		750	900	mV	-12V < V _{COM} < +12V
Negative-going bus input threshold voltage	V _{IT-}	500	650		mV	
Hysteresis voltage	V _{HYS}		100		mV	
Power-off (unpowered) bus input leakage current	I _{I OFF(LKG)}	-5		5	μA	V _{CANH} / V _{CANL} = 5V, VCC = 0V, V _{IO} = 0V
Input capacitance to ground	C _I		13		pF	CANH or CANL
Differential input	C _{ID}		5		pF	
Differential input resistance	R _{ID}	19	33	52	kΩ	-2V ≤ V _{CANH} ≤ 7V, -2V ≤ V _{CANL} ≤ 7V, R _{ID} =R _{CANH} +R _{CANL}
Input resistance	R _{IN}	9	16	28	kΩ	-2V ≤ V _{CANH} ≤ 7V, -2V ≤ V _{CANL} ≤ 7V
Input resistance matching	R _{I match}	-3		+3	%	CANH=CANL
Common-mode voltage range	V _{COM}	-30		+30	V	

6.2. Switching Electrical Characteristics

(VDD1=2.5V~5.5V, VDD2=4.5V~5.5V, T_A=-40°C to 125°C. Unless otherwise noted, Typical values are at VDD1 = 3.3V, VDD2 = 5V, T_A = 25°C)

Parameters	Symbol	Min	Typ	Max	Unit	Comments
Loop delay1	T _{loop1}		90	220	ns	Driver input to receiver output, Recessive to Dominant, see Figure 6.6
Loop delay2	T _{loop2}		100	220	ns	Driver input to receiver output, Dominant to Recessive, see Figure 6.6
transmitted recessive bit width	t _{bit(bus)}	435		530	ns	t _{bit(TXD)} = 500 ns
		155		210	ns	t _{bit(TXD)} = 200 ns
bit time on pin RXD	t _{bit(RXD)}	400		550	ns	t _{bit(TXD)} = 500 ns
		120		220	ns	t _{bit(TXD)} = 200 ns
Driver						
Propagation delay time, recessive -to- dominant output	t _{PLH}		52		ns	see Figure 6.3
Propagation delay time, dominant -to- recessive output	t _{PHL}		73		ns	see Figure 6.3
Differential output signal rise time	t _r		64		ns	see Figure 6.3
Differential output signal fall time	t _f		52		ns	see Figure 6.3
Bus dominant time-out time	t _{TXD_DTO}	800	2000	4000	μs	see Figure 6.7
Receiver						
Propagation delay time, low-to-high-level output	t _{PLH}		32		ns	see Figure 6.5
Propagation delay time, high-to-low-level output	t _{PHL}		35		ns	see Figure 6.5
RXD signal rise time	t _r		3		ns	see Figure 6.5
RXD signal fall time	t _f		3		ns	see Figure 6.5

6.3. Parameter Measurement Information

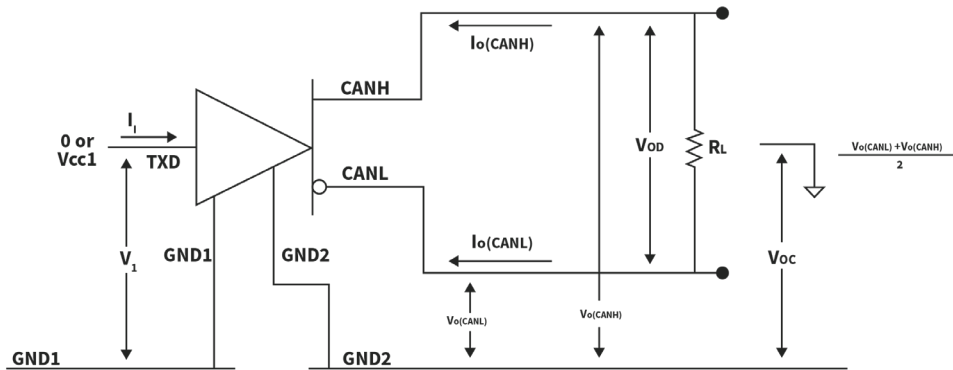


Figure 6.1. Driver Voltage, Current and Test Definitions

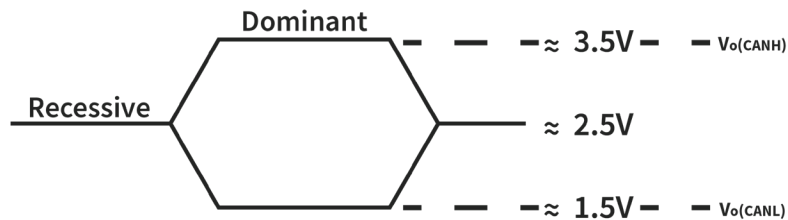
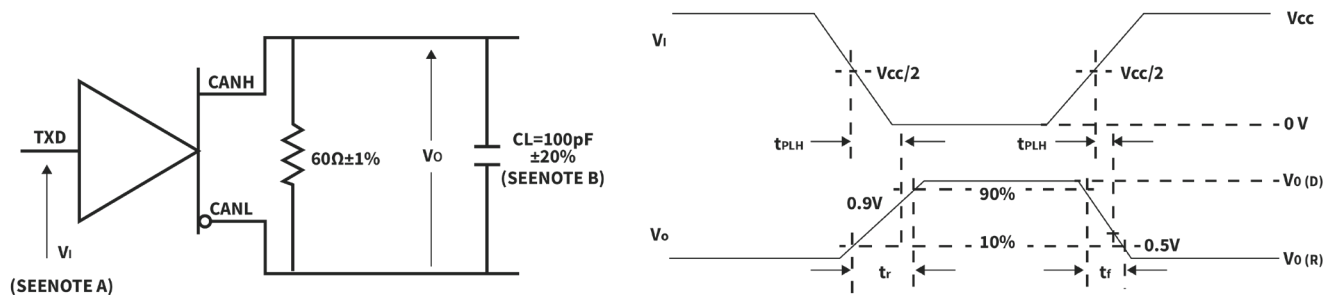


Figure 6.2. Bus Logic State Voltage Definitions



A. The input pulse is supplied by a generator having the following characteristics: PRR ≤ 125 kHz, 50% duty cycle, $t_r \leq 6$ ns, $t_f \leq 6$ ns, $Z_o = 50 \Omega$.

B. C_L includes instrumentation and fixture capacitance within ±20%.

Figure 6.3. Driver Test Circuit and Voltage Waveform

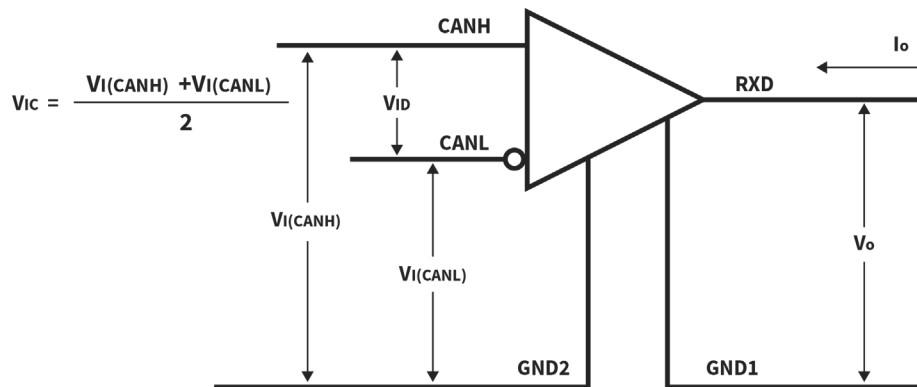
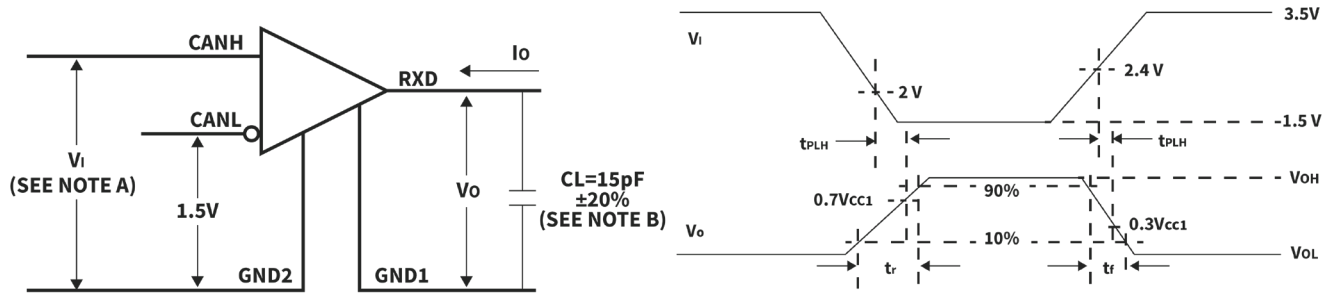


Figure 6.4. Receiver Voltage and Current Definitions



- A. The input pulse is supplied by a generator having the following characteristics: $PRR \leq 125 \text{ kHz}$, 50% duty cycle, $t_r \leq 6 \text{ ns}$, $t_f \leq 6 \text{ ns}$, $Z_o = 50 \Omega$.
- B. C_L includes instrumentation and fixture capacitance within $\pm 20\%$.

Figure 6.5. Receiver Test Circuit and Voltage Waveform

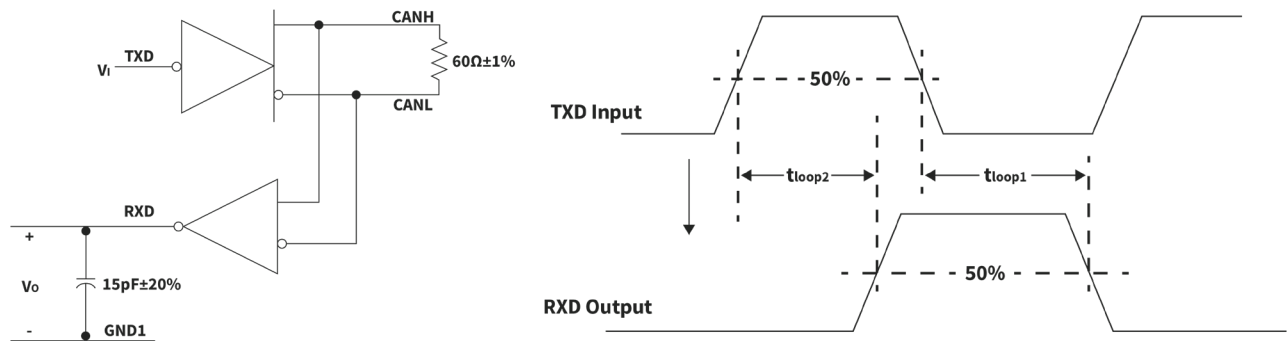
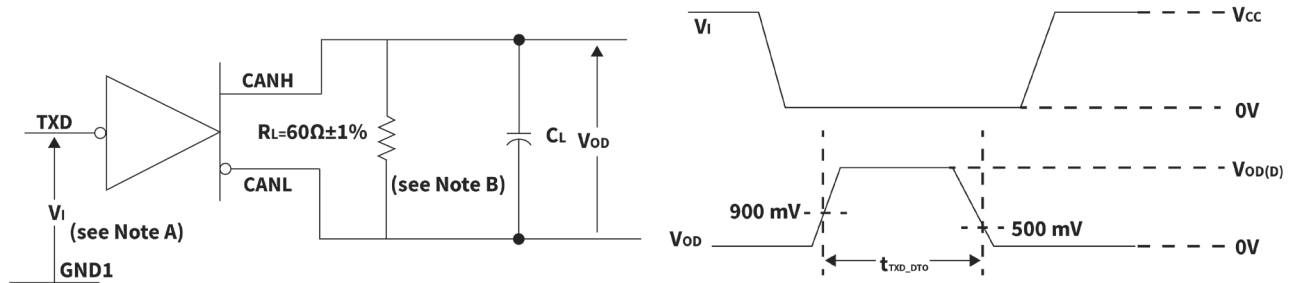


Figure 6.6. t_{LOOP} Test Circuit and Voltage Waveform



A. The input pulse is supplied by a generator having the following characteristics: $PRR \leq 125$ kHz, 50% duty cycle, $t_r \leq 6$ ns, $t_f \leq 6$ ns, $Z_o = 50 \Omega$.

B. C_L includes instrumentation and fixture capacitance within $\pm 20\%$.

Figure 6.7. Dominant Time-out Test Circuit and Voltage Waveform

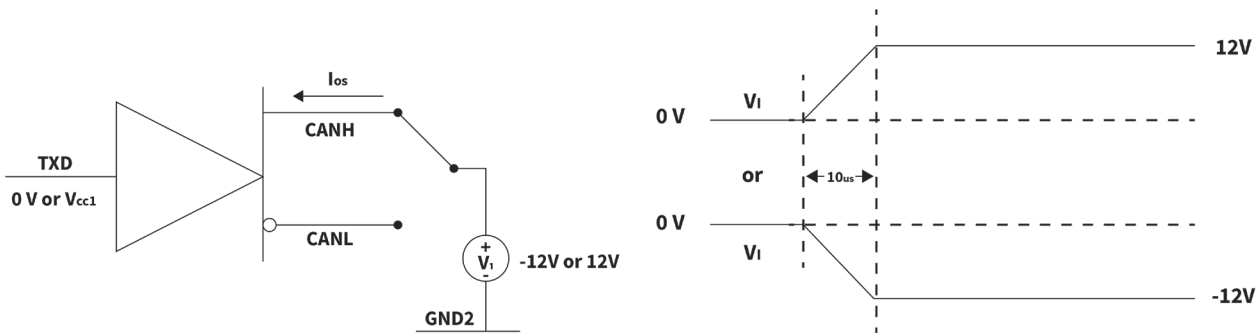


Figure 6.8. Driver Short-Circuit Current Test Circuit and Waveform

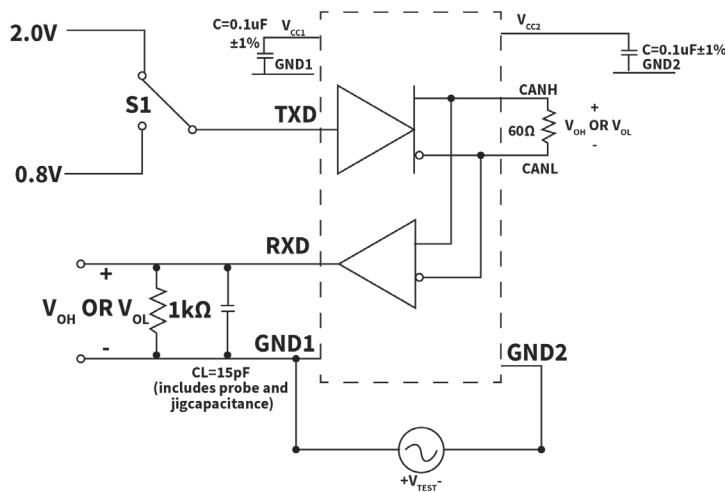


Figure 6.9. Common-Mode Transient Immunity Test Circuit

7. High Voltage Feature Description

7.1. Insulation and Safety Related Specifications

Parameters	Symbol	Value		Unit	Comments
		SOP8(300mil)	SOP16(300mil)		
Minimum External Clearance	CLR	8	8	mm	IEC 60664-1:2007
Minimum External Creepage	CPG	8	8	mm	IEC 60664-1:2007
Distance Through Insulation	DTI	28		µm	Distance through insulation
Tracking Resistance (Comparative Tracking Index)	CTI	>600		V	DIN EN 60112 (VDE 0303-11); IEC 60112
Material Group		I			IEC 60664-1

Description	Test Condition	Value	
		SOP8(300mil)	SOP16(300mil)
Overvoltage Category per IEC60664-1	For Rated Mains Voltage $\leq 150V_{rms}$	I to IV	I to IV
	For Rated Mains Voltage $\leq 300V_{rms}$	I to IV	I to IV
	For Rated Mains Voltage $\leq 600V_{rms}$	I to IV	I to IV
	For Rated Mains Voltage $\leq 1000V_{rms}$	I to III	I to III
Climatic Classification		40/125/21	
Pollution Degree per DIN VDE 0110,		2	

7.2. Insulation Characteristics

Description	Test Condition	Symbol	Value		Unit
			SOP8(300mil)	SOP16(300mil)	
Maximum Working Isolation Voltage	AC voltage	V_{IOWM}	1500	1500	V_{RMS}
	DC voltage		2121	2121	V_{DC}
Maximum Repetitive Isolation Voltage		V_{IORM}	2121	2121	V_{PEAK}
Apparent Charge	Method a, after Input/output safety test subgroup 2/3, $V_{ini}=V_{IOTM}$, $t_{ini}=60s$, $V_{pd(m)}=1.2*V_{IORM}$, $t_m=10s$.		<5	<5	pC
	Method a, after environmental tests subgroup 1, $V_{ini}=V_{IOTM}$,				pC

Description	Test Condition	Symbol	Value	Unit	
	$t_{ini}=60s, V_{pd(m)}=1.6 \cdot V_{IORM}, t_m=10s$				
	Method b, routine test (100% production) and preconditioning (type test); $V_{ini}=1.2 \cdot V_{IOTM}, t_{ini}=1s$ $V_{pd(m)}=1.875 \cdot V_{IORM}, t_m=1s$ (method b1) or $V_{pd(m)}=V_{ini}, t_m=t_{ini}$ (method b2)			pC	
Maximum Transient Isolation Voltage	$t = 60 \text{ sec}$	V_{IOTM}	8000	8000	V_{PEAK}
Maximum impulse voltage	Tested in air, 1.2/50- μ s waveform per IEC62368-1	V_{IMP}	6250	6250	V_{PEAK}
Maximum Surge Isolation Voltage	Test method per IEC62368-1, 1.2/50 μ s waveform, $V_{IOSM} \geq V_{IMP} \times 1.3$	V_{IOSM}	10000	10000	V_{PEAK}
Isolation Resistance	$V_{IO} = 500V, T_A=25 \text{ }^\circ\text{C}$	R_{IO}	$>10^{12}$		
	$V_{IO} = 500 \text{ V}, 100 \text{ }^\circ\text{C} \leq T_A \leq 125 \text{ }^\circ\text{C}$		$>10^{11}$		Ω
	$V_{IO} = 500 \text{ V}, T_A = T_S$		$>10^9$		Ω
Isolation Capacitance	$f = 1\text{MHz}$	C_{IO}	1.2		pF
UL1577					
Withstand Isolation Voltage	$V_{TEST} = V_{ISO}, t = 60 \text{ s}$ (qualification), $V_{TEST} = 1.2 \times V_{ISO}, t = 1 \text{ sec}$, 100% production test	V_{ISO}	5000	5700	V_{RMS}

1) This coupler is suitable for “safe electrical insulation” only within the safety ratings. Compliance with the safety ratings shall be ensured by means of suitable protective circuits.

7.3. Safety-Limiting Values

Reinforced isolation safety-limiting values as outlined in VDE-0884-17 of NSI1042C-DSWVR

Description	Test Condition	Value	Unit
Safety Supply Power	$R_{\theta JA} = 100 \text{ }^\circ\text{C/W}^1, T_J = 150 \text{ }^\circ\text{C}, T_A = 25 \text{ }^\circ\text{C}$	1250	mW
Safety Supply Current	$R_{\theta JA} = 100 \text{ }^\circ\text{C/W}^1, V_I = 5V, T_J = 150 \text{ }^\circ\text{C}, T_A = 25 \text{ }^\circ\text{C}$	250	mA
Safety Temperature ²⁾		150	$^\circ\text{C}$

- Calculate with the junction-to-air thermal resistance, $R_{\theta JA}$, of SOP8(300mil) package ([Thermal Information Table](#)) which is that of a device installed on a low effective thermal conductivity test board (1s) according to JESD51-3.
- The maximum safety temperature has the same value as the maximum junction temperature (T_J) specified for the device.

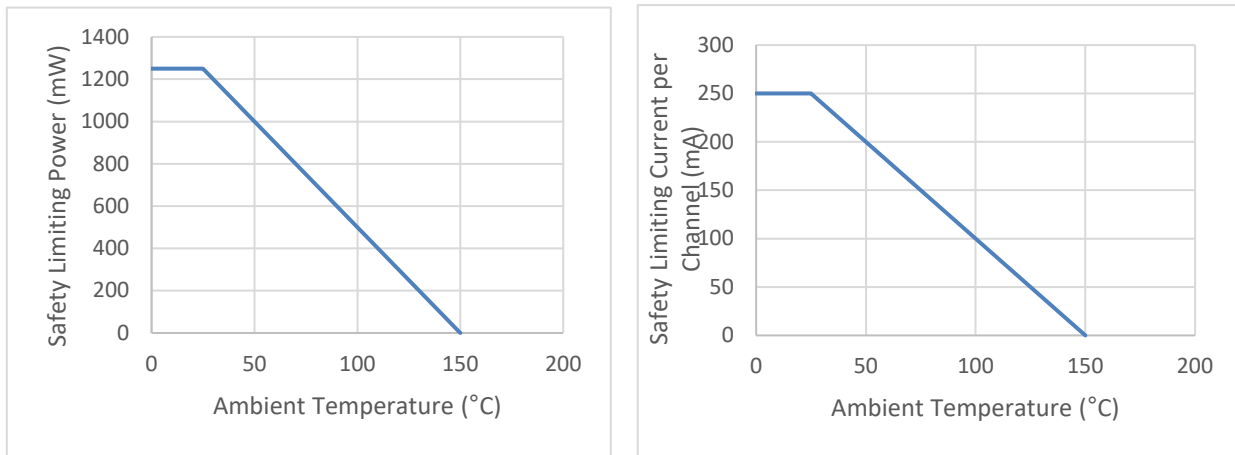


Figure 7.1 NSI1042C-DSWVR Thermal derating Curve, Dependence of Safety Limiting Values with Case Temperature per DIN EN IEC 60747-17 (VDE 0884-17)

Reinforced isolation safety-limiting values as outlined in VDE-0884-17 of NSI1042C-DSWR

Description	Test Condition	Value	Unit
Safety Supply Power	$R_{\theta JA} = 69.9 \text{ }^\circ\text{C/W}^1$, $T_J = 150 \text{ }^\circ\text{C}$, $T_A = 25 \text{ }^\circ\text{C}$	1788	mW
Safety Supply Current	$R_{\theta JA} = 69.9 \text{ }^\circ\text{C/W}^1$, $V_I = 5\text{V}$, $T_J = 150 \text{ }^\circ\text{C}$, $T_A = 25 \text{ }^\circ\text{C}$	357	mA
Safety Temperature ²⁾		150	$^\circ\text{C}$

- 1) Calculate with the junction-to-air thermal resistance, $R_{\theta JA}$, of SOP16(300mil) package ([Thermal Information Table](#)) which is that of a device installed on a low effective thermal conductivity test board (1s) according to JESD51-3.
- 2) The maximum safety temperature has the same value as the maximum junction temperature (T_J) specified for the device.

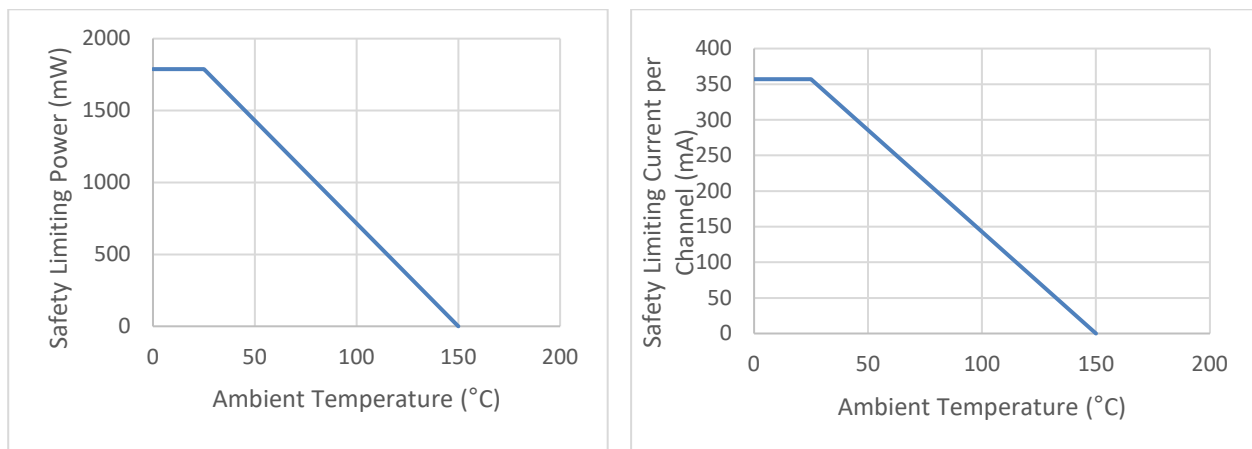


Figure 7.2 NSI1042C-DSWR Thermal derating Curve, Dependence of Safety Limiting Values with Case Temperature per DIN EN IEC 60747-17 (VDE 0884-17)

7.4. Regulatory information

The NSI1042C-DSWVR is approved by the organizations listed in table.

<i>CUL</i>		<i>VDE</i>	<i>CQC</i>
UL 1577 Component Recognition Program	Approved under CSA Component Acceptance Notice 5A	DIN EN IEC 60747-17 (VDE 0884-17)	Certified according to GB4943.1
Single Protection, 5000V _{rms} Isolation voltage	Single Protection, 5000V _{rms} Isolation voltage	Reinforced Insulation V _{IORM} =2121V _{PEAK} V _{IOTM} =8000V _{PEAK} V _{IOSM} =10000V _{PEAK}	Reinforced insulation
E500602	E500602	File (pending)	File (pending)

The NSI1042C-DSWR is approved by the organizations listed in table.

<i>CUL</i>		<i>VDE</i>	<i>CQC</i>
UL 1577 Component Recognition Program	Approved under CSA Component Acceptance Notice 5A	DIN EN IEC 60747-17 (VDE 0884-17)	Certified according to GB4943.1
Single Protection, 5700V _{rms} Isolation voltage	Single Protection, 5700V _{rms} Isolation voltage	Reinforced Insulation V _{IORM} =2121V _{PEAK} V _{IOTM} =8000V _{PEAK} V _{IOSM} =10000V _{PEAK}	Reinforced insulation
E500602	E500602	File (pending)	File (pending)

8. Function Description

The NSI1042C is an isolated CAN transceiver which fully compatible with the ISO11898-2 standard. The NSI1042C integrated two channel digital isolators and a high reliability CAN transceiver. The digital isolator is silicon oxide isolation based on Novosense capacity isolation technology. The high integrated solution can help to simplify system design and improve reliability. The NSI1042C device is safety certified by UL1577 support 5kV_{rms} insulation withstand voltages, while providing high electromagnetic immunity and low emissions. The data rate of the NSI1042C is up to 5Mbps. The NSI1042C provides thermal protection and transmit data dominant time out function.

8.1. Device Functional Modes

Table 7.1. Driver Function Table

<i>TXD</i>	<i>CANH</i>	<i>CANL</i>	<i>BUS STATE</i>
L	H	L	Dominant
H	Z	Z	Recessive
Open	Z	Z	Recessive

¹ H= high level; L=low level; Z= common mode(recessive) bias to $V_{CC}/2$

Table 7.2. Receiver Function Table

$V_{ID}=CANH-CANL$	<i>RXD</i>	<i>BUS STATE</i>
$V_{ID} \geq 0.9V$	L	Dominant
$0.5V < V_{ID} < 0.9V$	X	Uncertain
$V_{ID} \leq 0.5V$	H	Recessive
Open	H	Recessive

¹ H= high level; L=low level; X= uncertain

8.2. TXD dominant time-out function

A 'TXD dominant time-out' timer circuit prevents the bus lines from being driven to a permanent dominant state (blocking all network communication) if pin TXD is forced permanently LOW by a hardware and/or software application failure. The timer is triggered by a negative edge on pin TXD.

If the duration of the LOW level on pin TXD exceeds the internal timer value (t_{TXD_DTO}), the transmitter is disabled, driving the bus lines into a recessive state. The timer is reset by a positive edge on pin TXD.

8.3. Bus dominant time-out function

In Standby mode, a 'bus dominant time-out' timer is started when the CAN bus changes from recessive to dominant state. If the dominant state on the bus persists for longer than $t_{to(dom)bus}$, the RXD pin is forced HIGH. This prevents a clamped dominant bus (due to a bus short-circuit or a failure in one of the other nodes on the network) generating a permanent wake-up request. The bus dominant time-out timer is reset when the CAN bus changes from dominant to recessive state.

8.4. Current Protection

A current-limiting circuit protects the transmitter output stage from damage caused by accidental short-circuit to either positive or negative supply voltage, although power dissipation increases during this fault condition.

8.5. Over Temperature Protection

The output drivers are protected against over-temperature conditions. If the virtual junction temperature exceeds the shutdown junction temperature T_{TS} , the output drivers will be disabled until the virtual junction temperature becomes lower than T_{TS} and TXD becomes recessive again.

By including the TXD condition, the occurrence of output driver oscillation due to temperature drifts is avoided.

9. Application Note

9.1. Typical Application

The NSI1042C requires a 0.1 μF bypass capacitors between VDD1 and GND1, VDD2 and GND2. The capacitor should be placed as close as possible to the package. The figure 8.1 is the basic schematic of NSI1042C.

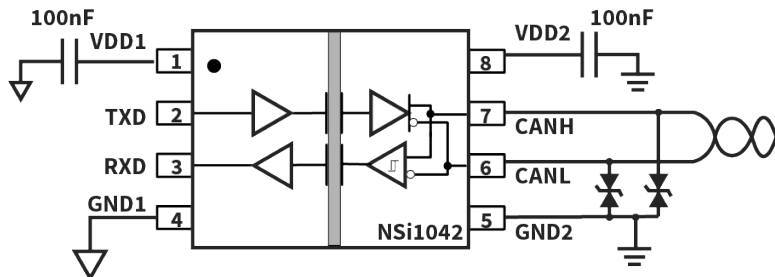


Figure 9.1 Basic schematic of NSI1042C

9.2. PCB Layout

The recommended PCB layout shown below.

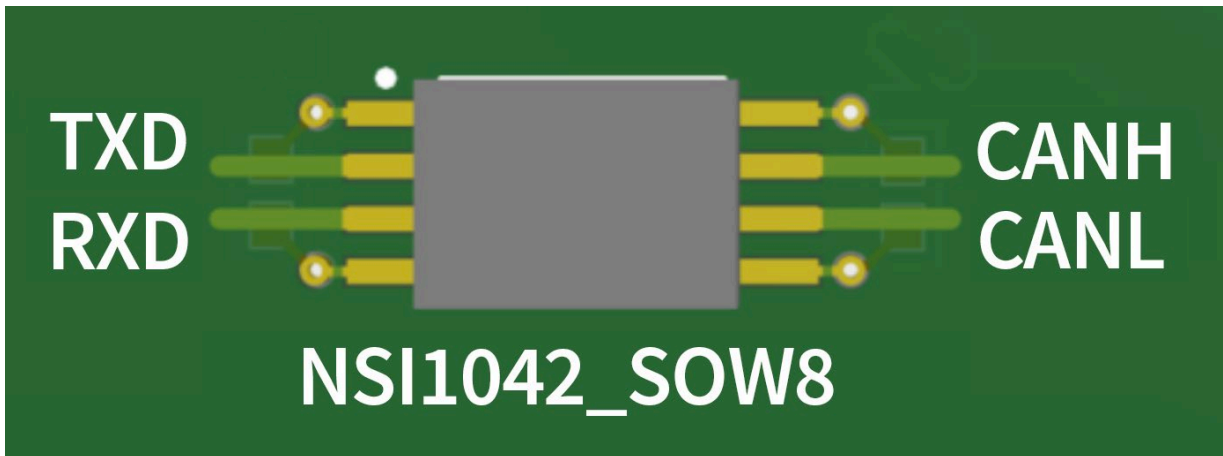


Figure 9.2 Recommended PCB Layout — Top Layer

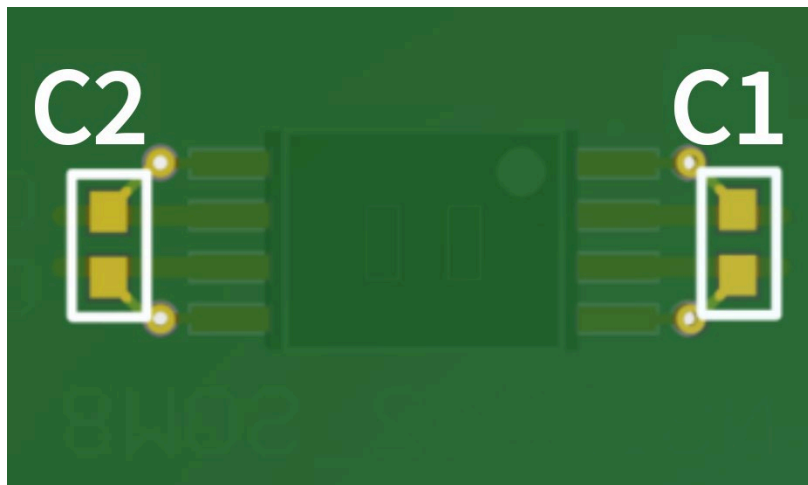


Figure 9.3 Recommended PCB Layout — Bottom Layer

10. Package Information

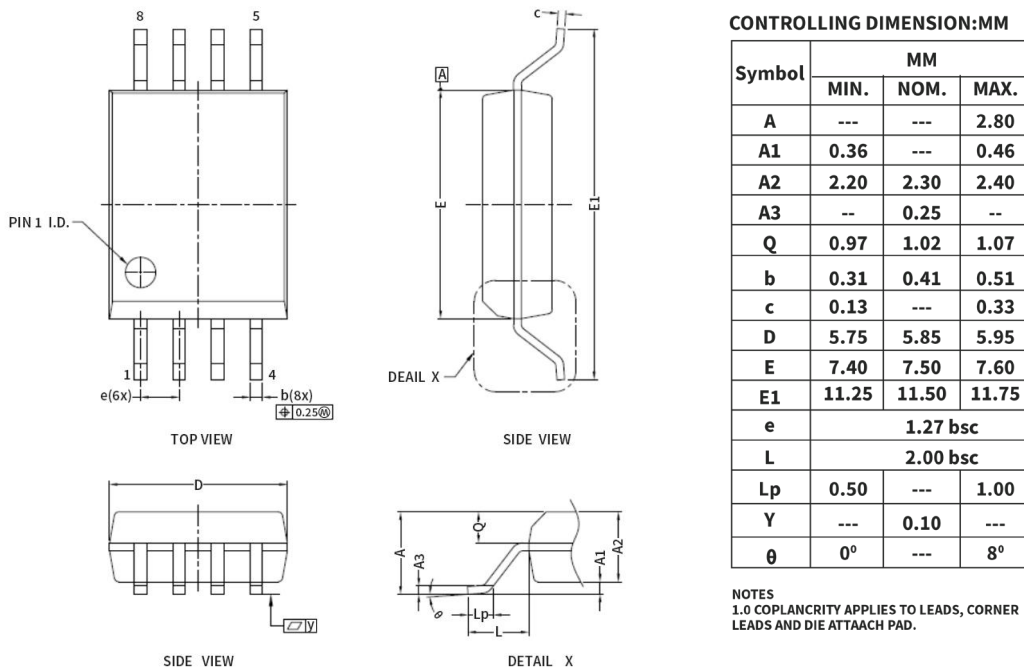


Figure 10.1 SOP8(300mil) Package Shape and Dimension in millimeters

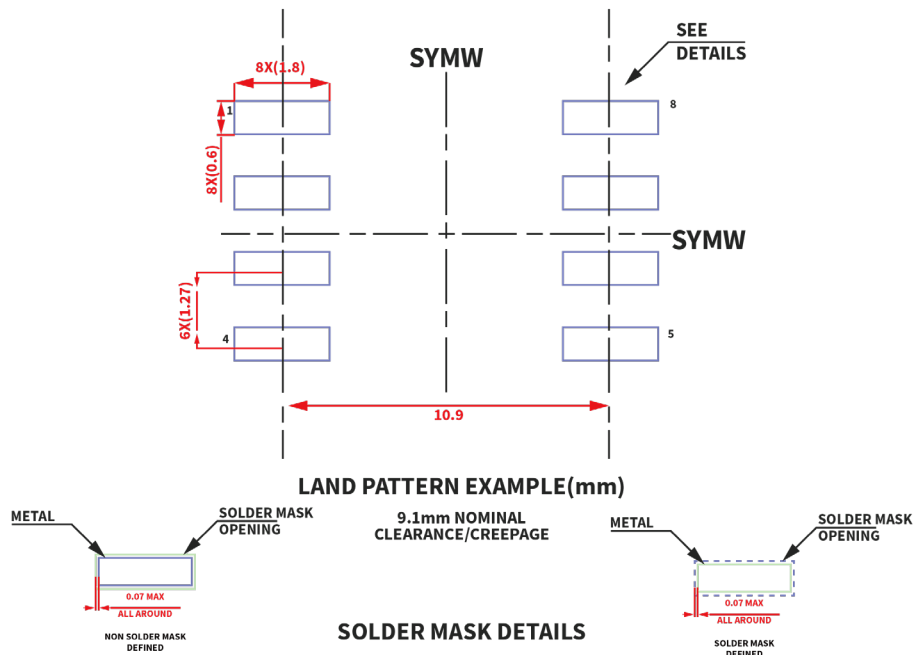


Figure 10.2 SOP8(300mil) Package Board Layout Example

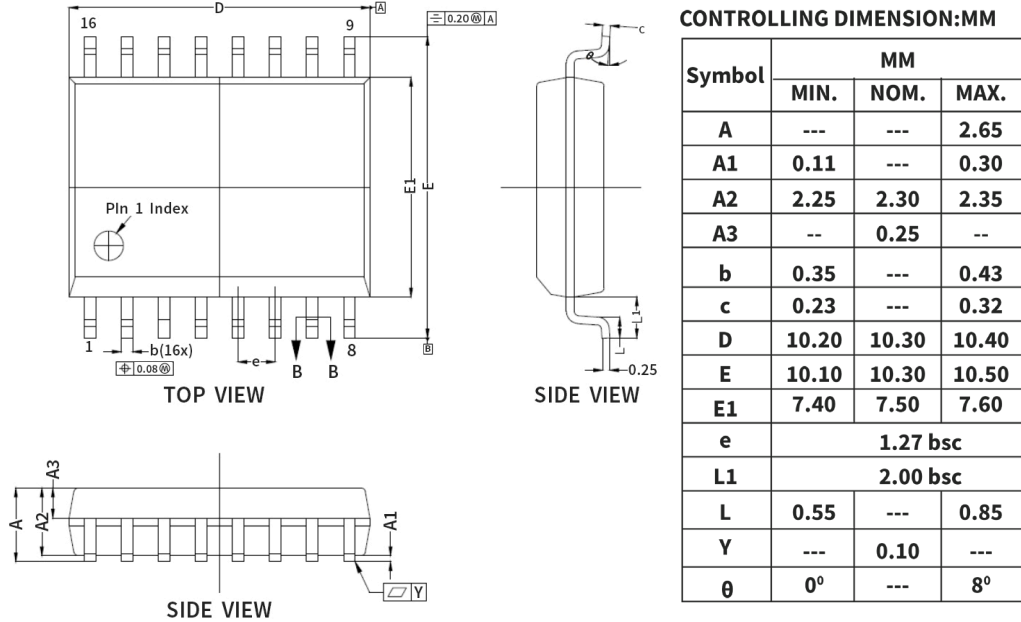


Figure 10.3 SOP16(300mil) Package Shape and Dimension in millimeters

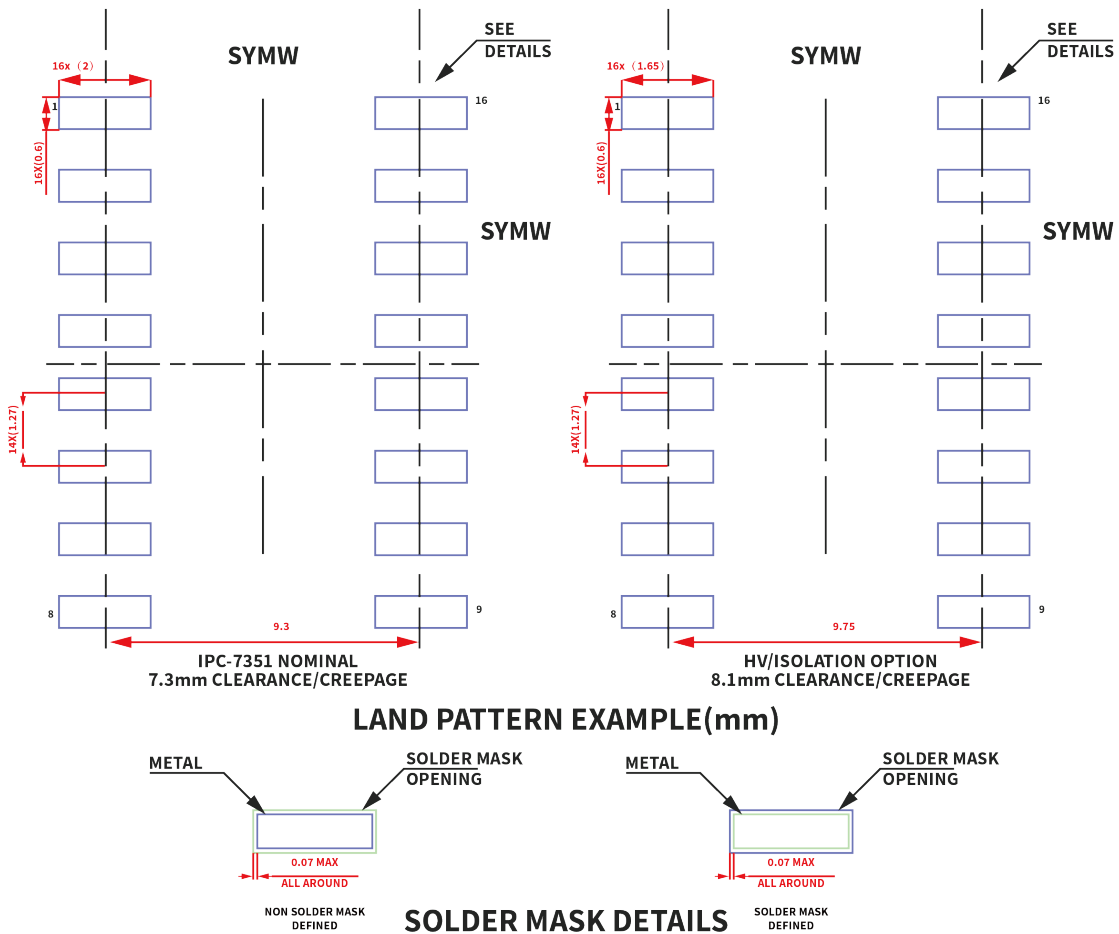


Figure 10.4 SOP16(300mil) Package Board Layout Example

11. Order Information

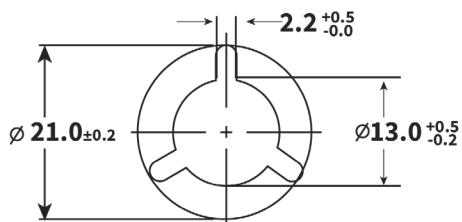
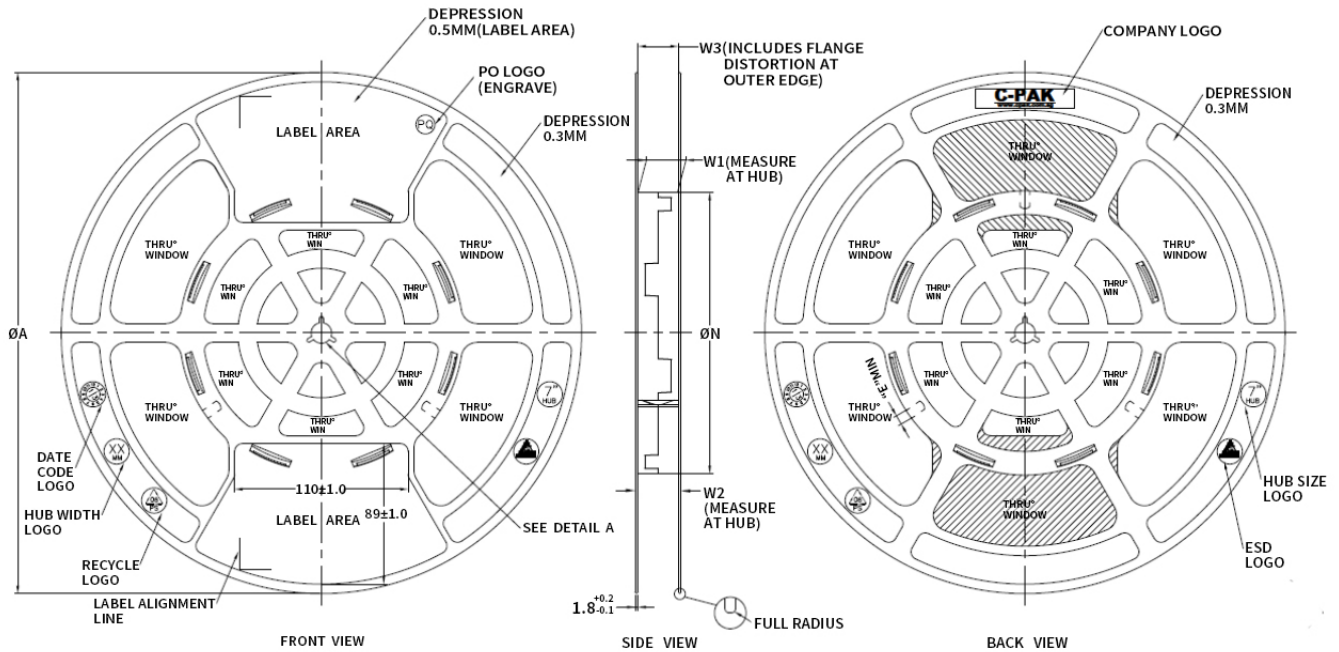
<i>Part Number</i>	<i>Isolation Rating (kV)</i>	<i>Max Data Rate (Mbps)</i>	<i>Temperature</i>	<i>MSL</i>	<i>Package Type</i>	<i>Package Drawing</i>	<i>SPQ</i>
NSI1042C-DSWVR	5	5 (CAN FD)	-40 to 125°C	3	SOP8 (300mil)	SOW8	1000
NSI1042C-DSWR	5.7	5 (CAN FD)	-40 to 125°C	2	SOP16 (300mil)	SOW16	1000

NOTE: All packages are RoHS-compliant with peak reflow temperatures of 260 °C according to the JEDEC industry standard classifications and peak solder temperatures.

12. Documentation Support

<i>Part Number</i>	<i>Product Folder</i>	<i>Datasheet</i>	<i>Technical Documents</i>	<i>Isolator selection guide</i>
NSI1042C	Click here	Click here	Click here	Click here

13. Tape and Reel Information



**ARBOR HOLE
DETAIL A
SCALE: 3:1**

PRODUCT SPECIFICATION						
TAPE WIDTH	$\varnothing A$ ± 2.0	$\varnothing N$ ± 2.0	W1	W2 (Max)	W3	E (MIN)
08MM	330	178	$8.4^{+1.5}_{-0.0}$	14.4	SHALL ACCOMMODATE TAPE WIDTH WITHOUT INTERFERENCE	5.5
12MM	330	178	$12.4^{+2.0}_{-0.0}$	18.4		5.5
16MM	330	178	$16.4^{+2.0}_{-0.0}$	22.4		5.5
24MM	330	178	$24.4^{+2.0}_{-0.0}$	30.4		5.5
32MM	330	178	$32.4^{+2.0}_{-0.0}$	38.4		5.5

SURFACE RESISTIVITY			
LEGEND	SR RANGE	TYPE	COLOUR
A	BELOW 10^{12}	ANTISTATIC	ALL TYPES
B	10^5 TO 10^{11}	STATIC DISSIPATIVE	BLACK ONLY
C	10^5 & BELOW 10^5	CONDUCTIVE(GENERIC)	BLACK ONLY
E	10^9 TO 10^{11}	ANTISTATIC(COATED)	ALL TYPES

Figure 13.1 Reel Information (for all packages)

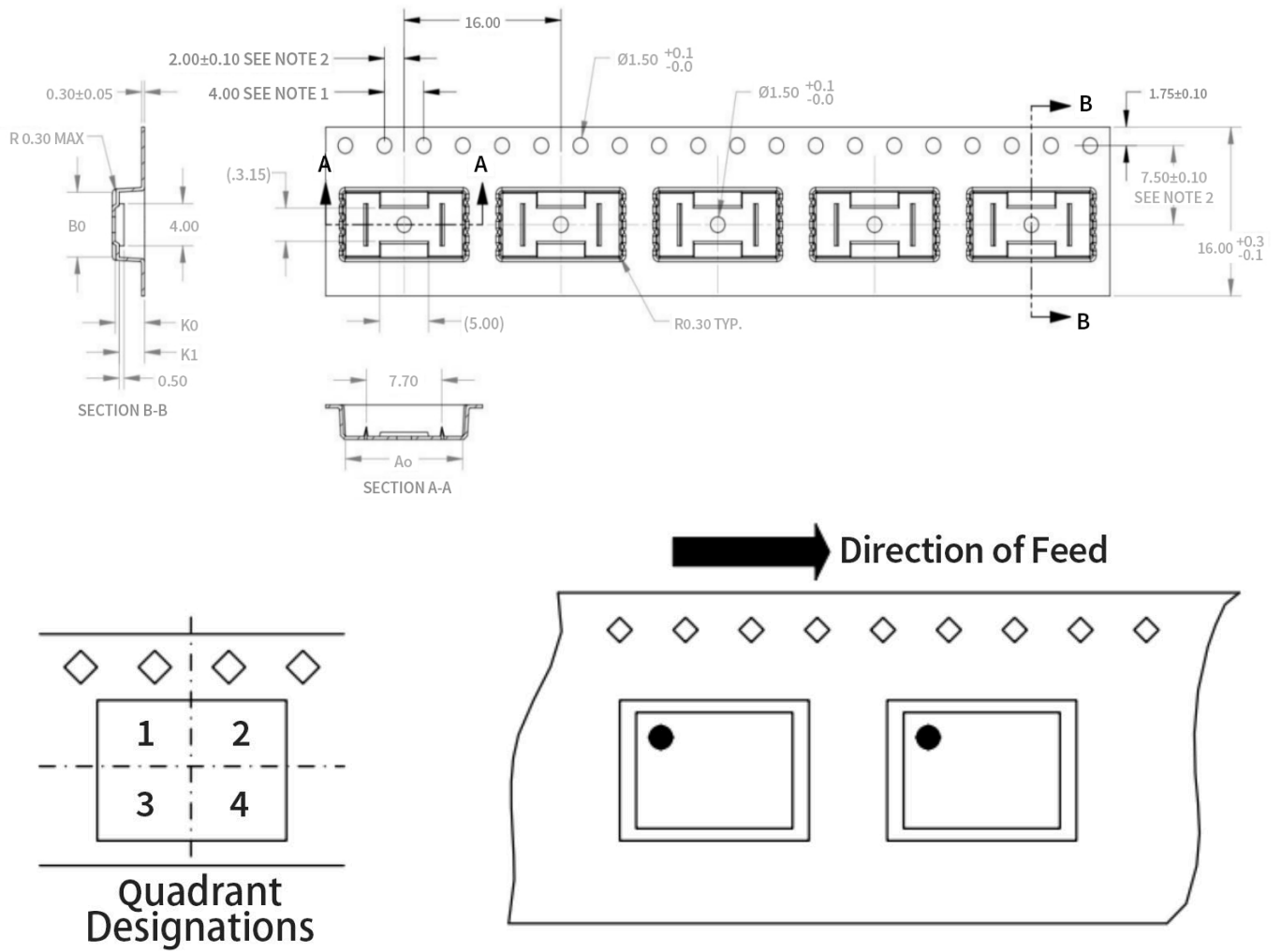
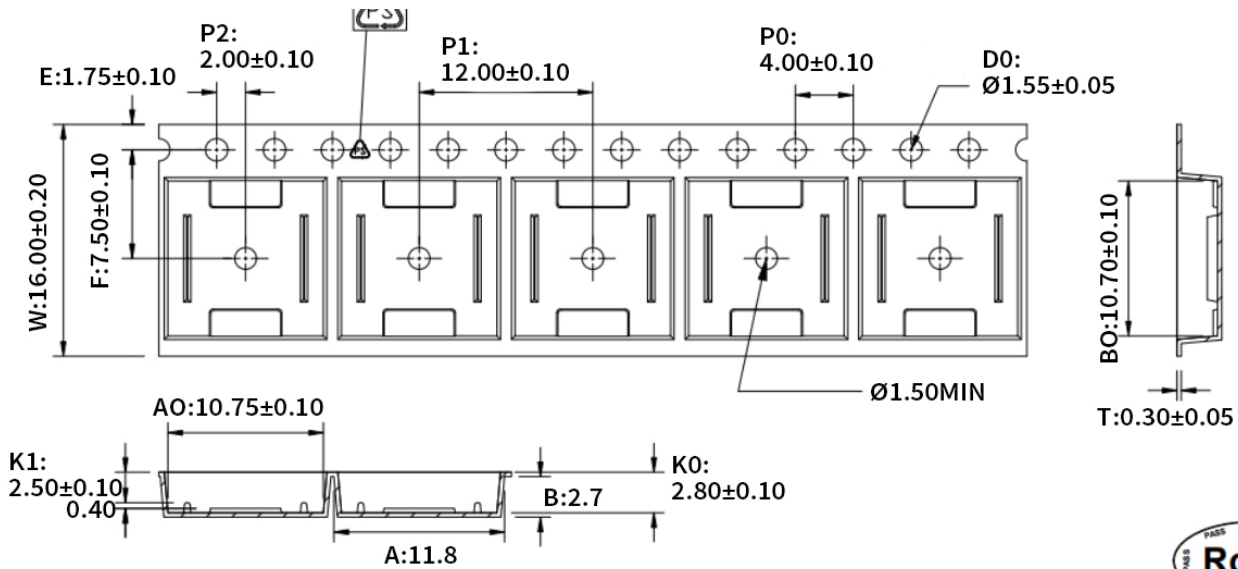


Figure 13.2 Tape Information of SOW8



1. 1.10 sprocket hole pitch cumulative tolerance ± 0.20 .
2. Carrier camber is within 1 mm in 250 mm.
3. Material : Black Conductive Polystyrene Alloy.
4. All dimensions meet EIA-481 requirements.
5. Thickness: 0.30 ± 0.05 mm.
6. Packing length per 22" reel: 378 Meters.(復卷 N=122)
7. Component load per 13" reel: 1000 pcs.
8. Surface resistivity: $10^5 \sim 10^{10} \Omega/\square$

W	16.00±0.20
A0	10.75±0.10
B0	10.70±0.10
K0	2.80±0.10
K1	2.50±0.10

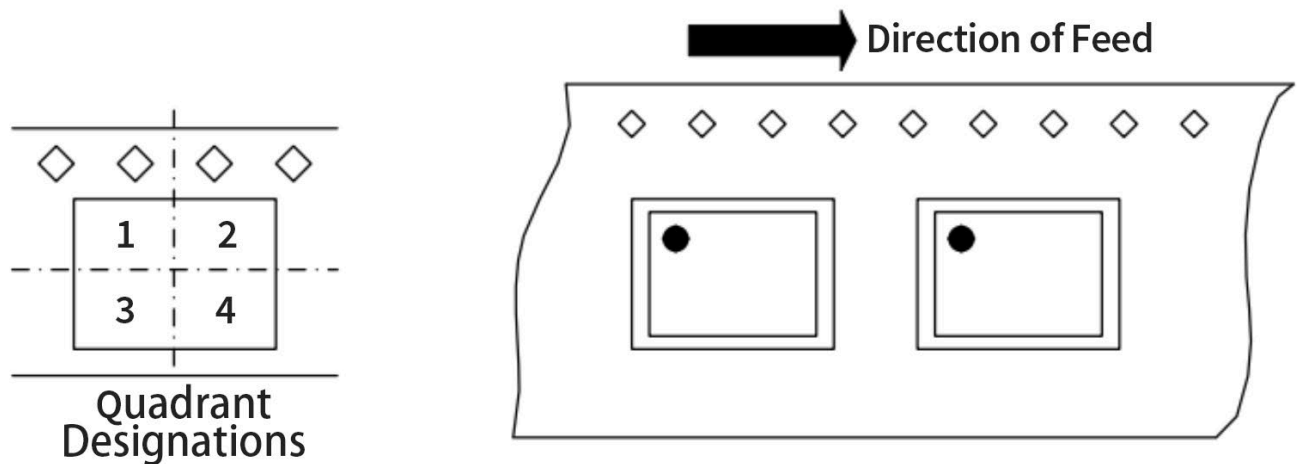


Figure 13.3 Tape and Reel Information of SOW16

14. Revision History

<i>Revision</i>	<i>Description</i>	<i>Date</i>
1.0	Initial version	2022/11/3
1.1	Update thermal temperature, Tape and Reel Information, Package Information, Correct figure errors, DTI	2023/2/7
1.2	Update CMTI	2023/3/10
1.3	Update Pin Configuration, Maximum BUS Pin Voltage, Common-mode voltage range, data rate, Insulation Characteristics, Regulatory Information and Safety Regulatory Approvals. Correct the value of RID and RIN.	2023/7/31
1.4	Update Specifications typical value. Correct Table 1.1 NSI1042C-DSWR Pin Configuration and Description	2023/9/12

IMPORTANT NOTICE

The information given in this document (the “Document”) shall in no event be regarded as any warranty or authorization of, express or implied, including but not limited to accuracy, completeness, merchantability, fitness for a particular purpose or infringement of any third party’s intellectual property rights.

Users of this Document shall be solely responsible for the use of NOVOSENSE’s products and applications, and for the safety thereof. Users shall comply with all laws, regulations and requirements related to NOVOSENSE’s products and applications, although information or support related to any application may still be provided by NOVOSENSE.

This Document is provided on an “AS IS” basis, and is intended only for skilled developers designing with NOVOSENSE’ products. NOVOSENSE reserves the rights to make corrections, modifications, enhancements, improvements or other changes to the products and services provided without notice. NOVOSENSE authorizes users to use this Document exclusively for the development of relevant applications or systems designed to integrate NOVOSENSE’s products. No license to any intellectual property rights of NOVOSENSE is granted by implication or otherwise. Using this Document for any other purpose, or any unauthorized reproduction or display of this Document is strictly prohibited. In no event shall NOVOSENSE be liable for any claims, damages, costs, losses or liabilities arising out of or in connection with this Document or the use of this Document.

For further information on applications, products and technologies, please contact NOVOSENSE (www.novosns.com).

Suzhou NOVOSENSE Microelectronics Co., Ltd